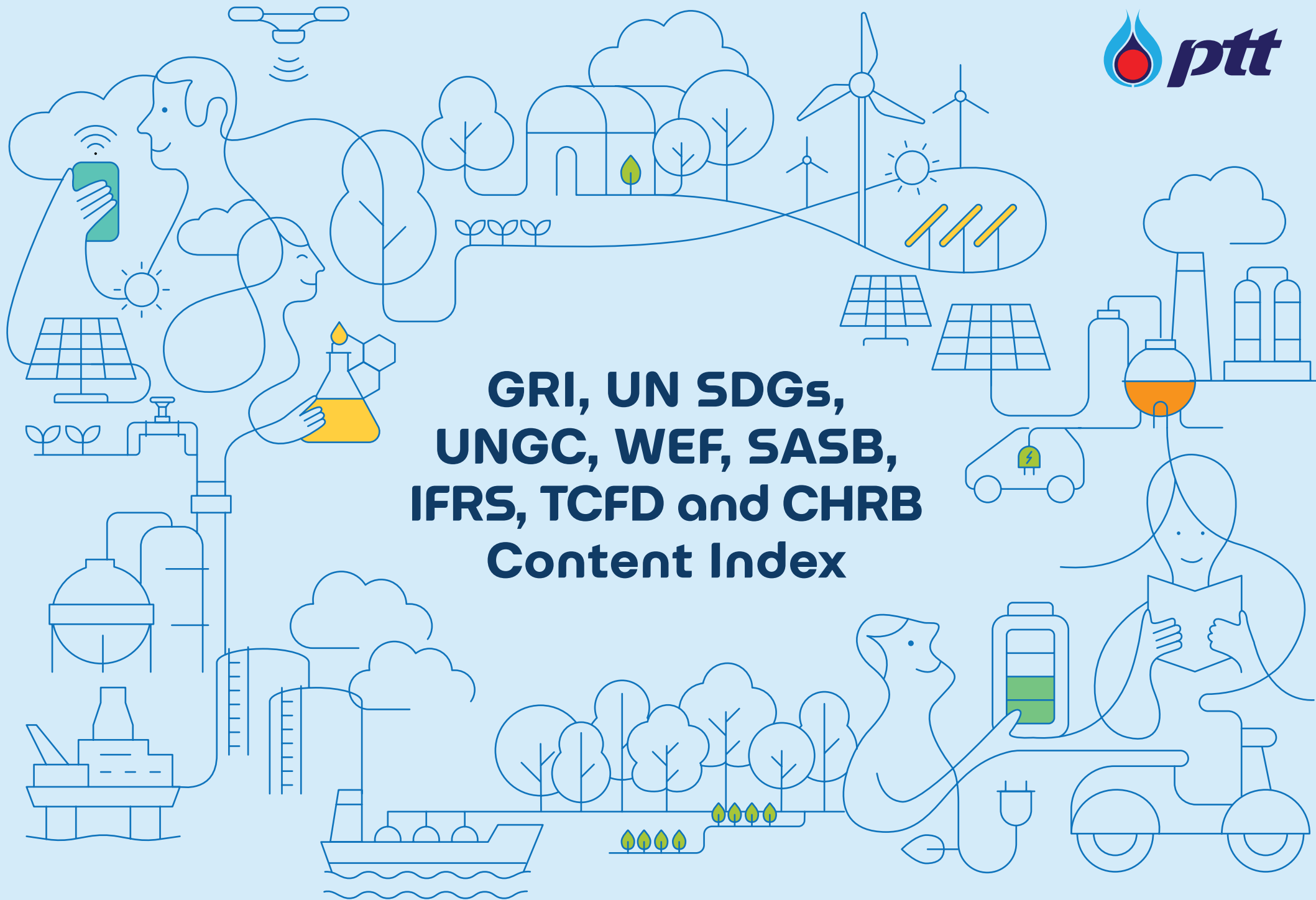




**GRI, UN SDGs,  
UNGC, WEF, SASB,  
IFRS, TCFD and CHRB  
Content Index**



## Global Reporting Initiative (GRI) content index

GRI STANDARD/ OTHER SOURCE	DISCLOSURE	LOCATION	OMISSION			GRI SECTOR STANDARD REF. NO.	SDG Targets	UNGC Principles	WEF	IFRS S1	IFRS S2
			REQUIREMENT(S) OMITTED	REASON	EXPLANATION						
<b>General disclosures</b>											
GRI 2: General Disclosures 2021	2-1 Organizational details	56-1 One Report 2023 (Page 4, 450) <a href="https://www.pttplc.com/en/About/About-Ptt/Background.aspx">https://www.pttplc.com/en/About/About-Ptt/Background.aspx</a>	A gray cell indicates that reasons for omission are not permitted for the disclosure or that a GRI Sector Standard reference number is not available.				10.4, 17.1, 17.3		Prosperity: Community and social vitality - Total tax paid by country for significant locations		
	2-2 Entities included in the organization's sustainability reporting	56-1 One Report 2023 (Page 450) <a href="https://www.pttplc.com/en/About/About-Ptt/Background.aspx">https://www.pttplc.com/en/About/About-Ptt/Background.aspx</a>									
	2-3 Reporting period, frequency and contact point	56-1 One Report 2023 (Page 450) <a href="https://www.pttplc.com/en/Sustainability/Sustainabilitygovernance/Sustainabilityreport.aspx">https://www.pttplc.com/en/Sustainability/Sustainabilitygovernance/Sustainabilityreport.aspx</a>									
	2-4 Restatements of information	56-1 One Report 2023 (Page 450) <a href="https://www.pttplc.com/en/Sustainability/Sustainabilitygovernance/Sustainabilityreport.aspx">https://www.pttplc.com/en/Sustainability/Sustainabilitygovernance/Sustainabilityreport.aspx</a>									
	2-5 External assurance	56-1 One Report 2023 (Page 451) <a href="https://www.pttplc.com/en/Sustainability/Sustainabilitygovernance/Sustainabilityreport.aspx">https://www.pttplc.com/en/Sustainability/Sustainabilitygovernance/Sustainabilityreport.aspx</a>					3.6, 3.9, 5.1, 5.2, 6.6, 7.2, 7.3, 8.4, 8.5, 8.8, 10.3, 11.5, 11.6, 12.2, 12.4, 12.5, 13.1, 14.3, 15.1, 15.2, 16.1	E4, E4.1, E6, E7.1, E13, E17, L8	Planet: Climate change - Greenhouse gas (GHG) emissions Planet: Air pollution - Air pollution Planet: Resource availability - Resource circularity Planet: Freshwater availability - Water consumption and withdrawal in water-stressed areas People: Dignity and equality - Pay gap (%) People: Health and well-being - Employee well-being (%) People: Health and well-being - Health and safety (%)		Metrics and Targets - Climate-related metrics
	2-6 Activities, value chain and other business relationships	56-1 One Report 2023 (Page 63-89) <a href="https://www.pttplc.com/uploads/About/PTT_COMPANY_PROFILE_ENG_22.pdf">https://www.pttplc.com/uploads/About/PTT_COMPANY_PROFILE_ENG_22.pdf</a>									
	2-7 Employees	Performance Summary <a href="https://www.pttplc.com/en/Sustainability/Sustainabilitygovernance/Sustainabilityreport.aspx">https://www.pttplc.com/en/Sustainability/Sustainabilitygovernance/Sustainabilityreport.aspx</a>					5.1, 5.5, 8.1, 8.2, 8.5, 9.1, 9.4, 9.5, 10.3	G11, L7			
	2-8 Workers who are not employees	Performance Summary <a href="https://www.pttplc.com/en/Sustainability/Sustainabilitygovernance/Sustainabilityreport.aspx">https://www.pttplc.com/en/Sustainability/Sustainabilitygovernance/Sustainabilityreport.aspx</a>					8.5		Prosperity: Employment and wealth generation - Economic contribution People: Dignity and equality - Diversity and inclusion (%)		
	2-9 Governance structure and composition	56-1 One Report 2023 (Page 262-265) <a href="https://www.pttplc.com/en/Sustainability/Sustainabilitygovernance/Corporategovernance.aspx">https://www.pttplc.com/en/Sustainability/Sustainabilitygovernance/Corporategovernance.aspx</a>					5.1, 5.5, 8.5, 16.7	G11	Principles of Governance: Quality of governing body - Governance body composition		
	2-10 Nomination and selection of the highest governance body	56-1 One Report 2023 (Page 263, 271-272) <a href="https://www.pttplc.com/en/Sustainability/Sustainabilitygovernance/Corporategovernance.aspx">https://www.pttplc.com/en/Sustainability/Sustainabilitygovernance/Corporategovernance.aspx</a>									
	2-11 Chair of the highest governance body	56-1 One Report 2023 (Page 264) <a href="https://www.pttplc.com/en/Sustainability/Sustainabilitygovernance/Corporategovernance.aspx">https://www.pttplc.com/en/Sustainability/Sustainabilitygovernance/Corporategovernance.aspx</a>					16.6				



GRI STANDARD/ OTHER SOURCE	DISCLOSURE	LOCATION	OMISSION			GRI SECTOR STANDARD REF. NO.	SDG Targets	UNGC Principles	WEF	IFRS S1	IFRS S2
			REQUIREMENT(S) OMITTED	REASON	EXPLANATION						
GRI 2: General Disclosures 2021	2-25 Processes to remediate negative impacts	56-1 One Report 2023 (Page 138, 146-148) <a href="https://www.pttplc.com/en/Sustainability/Social/Humanright.aspx">https://www.pttplc.com/en/Sustainability/Social/Humanright.aspx</a>									
	2-26 Mechanisms for seeking advice and raising concerns	56-1 One Report 2023 (Page 138, 146-148) <a href="https://www.pttplc.com/en/Sustainability/Sustainabilitygovernance/Fairpractice.aspx">https://www.pttplc.com/en/Sustainability/Sustainabilitygovernance/Fairpractice.aspx</a>					16.3	AC1, AC2, G2, G4, G5, G8	Principles of Governance: Ethical behaviour - Protected ethics advice and reporting mechanisms		
	2-27 Compliance with laws and regulations	56-1 One Report 2023 (Page 138, 140-141, 259, 348-349) <a href="https://www.pttplc.com/en/Sustainability/Sustainabilitygovernance/Fairpractice.aspx">https://www.pttplc.com/en/Sustainability/Sustainabilitygovernance/Fairpractice.aspx</a>					5.1, 8.8, 16.3, 16.5, 16.10	AC5, E1, E1.1, E3, G2, G4,	Principles of Governance: Ethical behaviour - Anti-Corruption People: Dignity and equality - Discrimination and Harassment Incidents (#) and the Total Amount of Monetary Losses (\$)		
	2-28 Membership associations	<a href="https://www.pttplc.com/en/Sustainability/Sustainabilitygovernance/Network.aspx">https://www.pttplc.com/en/Sustainability/Sustainabilitygovernance/Network.aspx</a>					16.5		Principles of Governance: Ethical behaviour - Alignment of strategy and policies to lobbying		
	2-29 Approach to stakeholder engagement	56-1 One Report 2023 (Page 144-148) <a href="https://www.pttplc.com/en/Sustainability/Sustainabilitygovernance/Stakeholderengagement.aspx">https://www.pttplc.com/en/Sustainability/Sustainabilitygovernance/Stakeholderengagement.aspx</a>									
	2-30 Collective bargaining agreements	<a href="https://www.pttplc.com/en/Sustainability/Social/Sustainablehumanresourcemanagement.aspx">https://www.pttplc.com/en/Sustainability/Social/Sustainablehumanresourcemanagement.aspx</a>					8.8	L6	People: Dignity and equality - Freedom of association and collective bargaining at risk (%)		
<b>Material topics</b>											
GRI 3: Material Topics 2021	3-1 Process to determine material topics	56-1 One Report 2023 (Page 151-157)	A gray cell indicates that reasons for omission are not permitted for the disclosure or that a GRI Sector Standard reference number is not available.						Principles of Governance: Stakeholder engagement - Material issues impacting stakeholders	Strategy - Sustainability -related risks and opportunities	
	3-2 List of material topics	56-1 One Report 2023 (Page 150-157) <a href="https://ptt.listedcompany.com/misc/one-report/20240314-ptt-one-report-2023-en.pdf">https://ptt.listedcompany.com/misc/one-report/20240314-ptt-one-report-2023-en.pdf</a>							Principles of Governance: Stakeholder engagement - Material issues impacting stakeholders	Strategy - Sustainability -related risks and opportunities	
<b>Economic performance</b>											
GRI 3: Material Topics 2021	3-3 Management of material topics	56-1 One Report 2023 (Page 151-157)								Metrics and Targets	
GRI 201: Economic Performance 2016	201-1 Direct economic value generated and distributed	56-1 One Report 2023 (Page 156-157, 181-190) Performance Summary <a href="https://www.pttplc.com/en/Sustainability/Sustainabilitygovernance/Sustainabilityreport.aspx">https://www.pttplc.com/en/Sustainability/Sustainabilitygovernance/Sustainabilityreport.aspx</a>				11.14.2	8.1, 8.2, 9.1, 9.4, 9.5		Prosperity: Employment and wealth generation - Economic contribution		

GRI STANDARD/ OTHER SOURCE	DISCLOSURE	LOCATION	OMISSION			GRI SECTOR STANDARD REF. NO.	SDG Targets	UNGC Principles	WEF	IFRS S1	IFRS S2
			REQUIREMENT(S) OMITTED	REASON	EXPLANATION						
GRI 201: Economic Performance 2016	201-2 Financial implications and other risks and opportunities due to climate change	<a href="https://www.pttplc.com/en/Sustainability/Sustainabilitygovernance/Riskandcrisismanagement.aspx">https://www.pttplc.com/en/Sustainability/Sustainabilitygovernance/Riskandcrisismanagement.aspx</a> <a href="https://www.pttplc.com/en/Sustainability/Sustainabilitygovernance/Sustainabilitystrategy.aspx">https://www.pttplc.com/en/Sustainability/Sustainabilitygovernance/Sustainabilitystrategy.aspx</a>				11.2.2	13.1		Principles of Governance: Risk and opportunity oversight - Integrating risk and opportunity into business process		Strategy - Financial position, financial performance and cash flows
	201-3 Defined benefit plan obligations and other retirement plans			Not applicable	Not required to disclose by GRI 11: Oil and Gas sector 2021	Not applicable					
	201-4 Financial assistance received from government	Performance Summary <a href="https://www.pttplc.com/en/Sustainability/Sustainabilitygovernance/Sustainabilityreport.aspx">https://www.pttplc.com/en/Sustainability/Sustainabilitygovernance/Sustainabilityreport.aspx</a>					11.21.3				
<b>Market presence</b>											
GRI 3: Material Topics 2021	3-3 Management of material topics	56-1 One Report 2023 (Page 151-157)									
GRI 202: Market Presence 2016	202-1 Ratios of standard entry level wage by gender compared to local minimum wage	<a href="https://www.pttplc.com/en/Sustainability/Social/Sustainablehumanresourcemanagement.aspx">https://www.pttplc.com/en/Sustainability/Social/Sustainablehumanresourcemanagement.aspx</a> Performance Summary <a href="https://www.pttplc.com/en/Sustainability/Sustainabilitygovernance/Sustainabilityreport.aspx">https://www.pttplc.com/en/Sustainability/Sustainabilitygovernance/Sustainabilityreport.aspx</a>		Not applicable	Not required by GRI 11: Oil and Gas sector 2021	Not applicable	1.2, 5.1, 8.5		Prosperity: Employment and wealth generation - Economic contribution		
	202-2 Proportion of senior management hired from the local community	<a href="https://www.pttplc.com/en/Sustainability/Social/Sustainablehumanresourcemanagement.aspx">https://www.pttplc.com/en/Sustainability/Social/Sustainablehumanresourcemanagement.aspx</a>				11.11.2	8.5				
<b>Indirect economic impacts</b>											
GRI 3: Material Topics 2021	3-3 Management of material topics	56-1 One Report 2023 (Page 151-157, 181-190)									
GRI 203: Indirect Economic Impacts 2016	203-1 Infrastructure investments and services supported	<a href="https://www.pttplc.com/en/Sustainability/Social/Corporatecitizenship.aspx">https://www.pttplc.com/en/Sustainability/Social/Corporatecitizenship.aspx</a>				11.14.4	5.4, 9.1, 9.4, 11.2				
	203-2 Significant indirect economic impacts	<a href="https://www.pttplc.com/en/Sustainability/Social/Corporatecitizenship.aspx">https://www.pttplc.com/en/Sustainability/Social/Corporatecitizenship.aspx</a>				11.14.5	1.2, 1.4, 3.8, 8.2, 8.3, 8.5				
<b>Procurement practices</b>											
GRI 3: Material Topics 2021	3-3 Management of material topics	56-1 One Report 2023 (Page 151-157) <a href="https://www.pttplc.com/en/Sustainability/Economics/Supplychainmanagement.aspx">https://www.pttplc.com/en/Sustainability/Economics/Supplychainmanagement.aspx</a>									
GRI 204: Procurement Practices 2016	204-1 Proportion of spending on local suppliers	<a href="https://www.pttplc.com/en/Sustainability/Economics/Supplychainmanagement.aspx">https://www.pttplc.com/en/Sustainability/Economics/Supplychainmanagement.aspx</a>				11.14.6	1.2, 8.3				

GRI STANDARD/ OTHER SOURCE	DISCLOSURE	LOCATION	OMISSION			GRI SECTOR STANDARD REF. NO.	SDG Targets	UNGC Principles	WEF	IFRS S1	IFRS S2
			REQUIREMENT(S) OMITTED	REASON	EXPLANATION						
<b>Anti-corruption</b>											
GRI 3: Material Topics 2021	3-3 Management of material topics	56-1 One Report 2023 (Page 151-157)									
GRI 205: Anti-corruption 2016	205-1 Operations assessed for risks related to corruption	<a href="https://www.ptplc.com/en/Sustainability/Sustainabilitygovernance/Fairpractice.aspx">https://www.ptplc.com/en/Sustainability/Sustainabilitygovernance/Fairpractice.aspx</a>				11.20.2	5.2, 5.5, 8.1, 8.3, 8.5, 8.7, 8.8, 16.1, 16.2, 16.3, 16.4, 16.5, 16.6, 16.7				
	205-2 Communication and training about anti-corruption policies and procedures	56-1 One Report 2023 (Page 256-259) <a href="https://www.ptplc.com/en/Sustainability/Sustainabilitygovernance/Fairpractice.aspx">https://www.ptplc.com/en/Sustainability/Sustainabilitygovernance/Fairpractice.aspx</a>				11.20.3	16.4, 16.5, 16.6				
	205-3 Confirmed incidents of corruption and actions taken	<a href="https://www.ptplc.com/en/Sustainability/Sustainabilitygovernance/Fairpractice.aspx">https://www.ptplc.com/en/Sustainability/Sustainabilitygovernance/Fairpractice.aspx</a>				11.20.4	16.4, 16.5, 16.6				
	Additional Sector Disclosures: Describe the approach to contract transparency	56-1 One Report 2023 (Page 248-249)				11.20.5					
	Additional Sector Disclosures: List the organization's beneficial owners and explain how the organization identifies the beneficial owners of business partners, including joint ventures and suppliers	56-1 One Report 2023 (Page 63-113)				11.20.6					
<b>Anti-competitive behavior</b>											
GRI 3: Material Topics 2021	3-3 Management of material topics	56-1 One Report 2023 (Page 151-157)									
GRI 206: Anti-competitive Behavior 2016	206-1 Legal actions for anti-competitive behavior, anti-trust, and monopoly practices					11.19.2	16.3				
<b>Tax</b>											
GRI 3: Material Topics 2021	3-3 Management of material topics	56-1 One Report 2023 (Page 151-157) <a href="https://www.ptplc.com/en/Sustainability/Economics/Taxstrategy.aspx">https://www.ptplc.com/en/Sustainability/Economics/Taxstrategy.aspx</a>									
GRI 207: Tax 2019	207-1 Approach to tax	<a href="https://www.ptplc.com/en/Sustainability/Economics/Taxstrategy.aspx">https://www.ptplc.com/en/Sustainability/Economics/Taxstrategy.aspx</a>				11.21.4	10.4, 17.1, 17.3				
	207-2 Tax governance, control, and risk management	<a href="https://www.ptplc.com/en/Sustainability/Economics/Taxstrategy.aspx">https://www.ptplc.com/en/Sustainability/Economics/Taxstrategy.aspx</a>				11.21.5	1.1, 1.3, 10.4, 17.1, 17.3				
	207-3 Stakeholder engagement and management of concerns related to tax	<a href="https://www.ptplc.com/en/Sustainability/Economics/Taxstrategy.aspx">https://www.ptplc.com/en/Sustainability/Economics/Taxstrategy.aspx</a>				11.21.6	1.1, 1.3, 10.4, 17.1, 17.3				

GRI STANDARD/ OTHER SOURCE	DISCLOSURE	LOCATION	OMISSION			GRI SECTOR STANDARD REF. NO.	SDG Targets	UNGC Principles	WEF	IFRS S1	IFRS S2
			REQUIREMENT(S) OMITTED	REASON	EXPLANATION						
GRI 207: Tax 2019	207-4 Country-by-country reporting	<a href="https://www.ptplc.com/en/Sustainability/Economics/Taxstrategy.aspx">https://www.ptplc.com/en/Sustainability/Economics/Taxstrategy.aspx</a>				11.21.7	10.4, 17.1, 17.3		Prosperity: Community and social vitality - Total tax paid by country for significant locations		
	Additional Sector Disclosures: For oil and gas purchased from the state, or from third parties appointed by the state to sell on their behalf			Not applicable	Not applicable for the organization	11.21.8					
<b>Materials</b>											
GRI 3: Material Topics 2021	3-3 Management of material topics	56-1 One Report 2023 (Page 151-157)									
GRI 301: Materials 2016	301-1 Materials used by weight or volume			Not applicable	Not required to disclose by GRI 11: Oil and Gas sector 2021	Not applicable	8.4, 12.2				
	301-2 Recycled input materials used			Not applicable	Not required to disclose by GRI 11: Oil and Gas sector 2021	Not applicable	8.4, 12.2, 12.5				
	301-3 Reclaimed products and their packaging materials			Not applicable	Not required to disclose by GRI 11: Oil and Gas sector 2021	Not applicable	8.4, 12.2, 12.5				
<b>Energy</b>											
GRI 3: Material Topics 2021	3-3 Management of material topics	56-1 One Report 2023 (Page 151-157)									
GRI 302: Energy 2016	302-1 Energy consumption within the organization	<a href="https://www.ptplc.com/en/Sustainability/Environment/Climatechangemanagement.aspx">https://www.ptplc.com/en/Sustainability/Environment/Climatechangemanagement.aspx</a> Performance Summary <a href="https://www.ptplc.com/en/Sustainability/Sustainabilitygovernance/Sustainabilityreport.aspx">https://www.ptplc.com/en/Sustainability/Sustainabilitygovernance/Sustainabilityreport.aspx</a>				11.1.2	7.2, 7.3, 8.4, 12.2, 13.1	E4, E4.1	Planet: Resource availability - Resource circularity		
	302-2 Energy consumption outside of the organization	<a href="https://www.ptplc.com/en/Sustainability/Environment/Climatechangemanagement.aspx">https://www.ptplc.com/en/Sustainability/Environment/Climatechangemanagement.aspx</a> Performance Summary <a href="https://www.ptplc.com/en/Sustainability/Sustainabilitygovernance/Sustainabilityreport.aspx">https://www.ptplc.com/en/Sustainability/Sustainabilitygovernance/Sustainabilityreport.aspx</a>				11.1.3	7.2, 7.3, 8.4, 12.2, 13.1				
	302-3 Energy intensity	Performance Summary <a href="https://www.ptplc.com/en/Sustainability/Sustainabilitygovernance/Sustainabilityreport.aspx">https://www.ptplc.com/en/Sustainability/Sustainabilitygovernance/Sustainabilityreport.aspx</a>				11.1.4	7.3, 8.4, 12.2, 13.1				
	302-4 Reduction of energy consumption			Not applicable	Not required by GRI 11: Oil and Gas sector 2021	Not applicable	7.3, 8.4, 12.2, 13.1				
	302-5 Reductions in energy requirements of products and services			Not applicable	Not required by GRI 11: Oil and Gas sector 2021	Not applicable	7.3, 8.4, 12.2, 13.1				

GRI STANDARD/ OTHER SOURCE	DISCLOSURE	LOCATION	OMISSION			GRI SECTOR STANDARD REF. NO.	SDG Targets	UNGC Principles	WEF	IFRS S1	IFRS S2
			REQUIREMENT(S) OMITTED	REASON	EXPLANATION						
<b>Water and effluents</b>											
GRI 3: Material Topics 2021	3-3 Management of material topics	56-1 One Report 2023 (Page 151-157, 169-173)							Planet: Freshwater availability - Impact of freshwater consumption and withdrawal Planet: Water pollution - Impact of water pollution		
GRI 303: Water and Effluents 2018	303-1 Interactions with water as a shared resource	<a href="https://www.pttplc.com/en/Sustainability/Environment/Water.aspx">https://www.pttplc.com/en/Sustainability/Environment/Water.aspx</a>				11.6.2					
	303-2 Management of water discharge-related impacts	<a href="https://www.pttplc.com/en/Sustainability/Environment/Water.aspx">https://www.pttplc.com/en/Sustainability/Environment/Water.aspx</a>				11.6.3					
	303-3 Water withdrawal	<a href="https://www.pttplc.com/en/Sustainability/Environment/Water.aspx">https://www.pttplc.com/en/Sustainability/Environment/Water.aspx</a> Performance Summary <a href="https://www.pttplc.com/en/Sustainability/Sustainabilitygovernance/Sustainabilityreport.aspx">https://www.pttplc.com/en/Sustainability/Sustainabilitygovernance/Sustainabilityreport.aspx</a>				11.6.4	6.3, 6.4	E13, E4	Planet: Freshwater availability - Water consumption and withdrawal in water-stressed areas		
	303-4 Water discharge	<a href="https://www.pttplc.com/en/Sustainability/Environment/Water.aspx">https://www.pttplc.com/en/Sustainability/Environment/Water.aspx</a> Performance Summary <a href="https://www.pttplc.com/en/Sustainability/Sustainabilitygovernance/Sustainabilityreport.aspx">https://www.pttplc.com/en/Sustainability/Sustainabilitygovernance/Sustainabilityreport.aspx</a>				11.6.5	6.3, 6.4	E13, E4	Planet: Freshwater availability - Water consumption and withdrawal in water-stressed areas		
	303-5 Water consumption	<a href="https://www.pttplc.com/en/Sustainability/Environment/Water.aspx">https://www.pttplc.com/en/Sustainability/Environment/Water.aspx</a> Performance Summary <a href="https://www.pttplc.com/en/Sustainability/Sustainabilitygovernance/Sustainabilityreport.aspx">https://www.pttplc.com/en/Sustainability/Sustainabilitygovernance/Sustainabilityreport.aspx</a>				11.6.6	6.3, 6.4	E13, E4	Planet: Freshwater availability - Water consumption and withdrawal in water-stressed areas		
<b>Biodiversity</b>											
GRI 3: Material Topics 2021	3-3 Management of material topics	56-1 One Report 2023 (Page152-157)							Planet: Nature loss - Impact of land use and conversion		
GRI 304: Biodiversity 2016	304-1 Operational sites owned, leased, managed in, or adjacent to, protected areas and areas of high biodiversity value outside protected areas	<a href="https://www.pttplc.com/en/Sustainability/Environment/Biodiversity.aspx">https://www.pttplc.com/en/Sustainability/Environment/Biodiversity.aspx</a>				11.4.2		E16	Planet: Nature loss - Land use and ecological sensitivity		
	304-2 Significant impacts of activities, products and services on biodiversity	<a href="https://www.pttplc.com/en/Sustainability/Environment/Biodiversity.aspx">https://www.pttplc.com/en/Sustainability/Environment/Biodiversity.aspx</a>				11.4.3	6.6, 14.2, 15.1, 15.5				
	304-3 Habitats protected or restored	<a href="https://www.pttplc.com/en/Sustainability/Environment/Biodiversity.aspx">https://www.pttplc.com/en/Sustainability/Environment/Biodiversity.aspx</a>				11.4.4	6.6, 14.2, 15.1, 15.5	E1, E1.1, E3, E4.1	Principles of Governance: Risk and opportunity oversight - Integrating risk and opportunity into business process		
	304-4 IUCN Red List species and national conservation list species with habitats in areas affected by operations	<a href="https://www.pttplc.com/en/Sustainability/Environment/Biodiversity.aspx">https://www.pttplc.com/en/Sustainability/Environment/Biodiversity.aspx</a>				11.4.5	6.6, 14.2, 15.1, 15.5				



GRI STANDARD/ OTHER SOURCE	DISCLOSURE	LOCATION	OMISSION			GRI SECTOR STANDARD REF. NO.	SDG Targets	UNGC Principles	WEF	IFRS S1	IFRS S2
			REQUIREMENT(S) OMITTED	REASON	EXPLANATION						
<b>Emissions</b>											
GRI 3: Material Topics 2021	3-3 Management of material topics	56-1 One Report 2023 (Page152-157)							Planet: Climate change - Impact of GHG Emissions Planet: Air pollution - Impact of air pollution		
GRI 305: Emissions 2016	305-1 Direct (Scope 1) GHG emissions	56-1 One Report 2023 (166-167) <a href="https://www.pttplc.com/en/Sustainability/Environment/Climatechangemanagement.aspx">https://www.pttplc.com/en/Sustainability/Environment/Climatechangemanagement.aspx</a> Performance Summary <a href="https://www.pttplc.com/en/Sustainability/Sustainabilitygovernance/Sustainabilityreport.aspx">https://www.pttplc.com/en/Sustainability/Sustainabilitygovernance/Sustainabilityreport.aspx</a>				11.1.5	3.9, 12.4, 13.1, 14.3, 15.2	E6	Planet: Climate change - Greenhouse gas (GHG) emissions		Metrics and Targets - Climate-related metrics
	305-2 Energy indirect (Scope 2) GHG emissions	56-1 One Report 2023 (166-167) <a href="https://www.pttplc.com/en/Sustainability/Environment/Climatechangemanagement.aspx">https://www.pttplc.com/en/Sustainability/Environment/Climatechangemanagement.aspx</a> Performance Summary <a href="https://www.pttplc.com/en/Sustainability/Sustainabilitygovernance/Sustainabilityreport.aspx">https://www.pttplc.com/en/Sustainability/Sustainabilitygovernance/Sustainabilityreport.aspx</a>				11.1.6	3.9, 12.4, 13.1, 14.3, 15.2	E4, E6	Planet: Climate change - Greenhouse gas (GHG) emissions		Metrics and Targets - Climate-related metrics
	305-3 Other indirect (Scope 3) GHG emissions	56-1 One Report 2023 (166-167) <a href="https://www.pttplc.com/en/Sustainability/Environment/Climatechangemanagement.aspx">https://www.pttplc.com/en/Sustainability/Environment/Climatechangemanagement.aspx</a> Performance Summary <a href="https://www.pttplc.com/en/Sustainability/Sustainabilitygovernance/Sustainabilityreport.aspx">https://www.pttplc.com/en/Sustainability/Sustainabilitygovernance/Sustainabilityreport.aspx</a>				11.1.7	3.9, 12.4, 13.1, 14.3, 15.3	E7.1	Planet: Climate change - Greenhouse gas (GHG) emissions		Metrics and Targets - Climate-related metrics
	305-4 GHG emissions intensity	56-1 One Report 2023 (167-168) <a href="https://www.pttplc.com/en/Sustainability/Environment/Climatechangemanagement.aspx">https://www.pttplc.com/en/Sustainability/Environment/Climatechangemanagement.aspx</a> Performance Summary <a href="https://www.pttplc.com/en/Sustainability/Sustainabilitygovernance/Sustainabilityreport.aspx">https://www.pttplc.com/en/Sustainability/Sustainabilitygovernance/Sustainabilityreport.aspx</a>				11.1.8					
	305-5 Reduction of GHG emissions	56-1 One Report 2023 (159-168) <a href="https://www.pttplc.com/en/Sustainability/Environment/Climatechangemanagement.aspx">https://www.pttplc.com/en/Sustainability/Environment/Climatechangemanagement.aspx</a> Performance Summary <a href="https://www.pttplc.com/en/Sustainability/Sustainabilitygovernance/Sustainabilityreport.aspx">https://www.pttplc.com/en/Sustainability/Sustainabilitygovernance/Sustainabilityreport.aspx</a>				11.2.3	13.1	E4.1	Planet: Climate change - Greenhouse gas (GHG) emissions		Metrics and Targets - Climate-related targets
	305-6 Emissions of ozone-depleting substances (ODS)			Not applicable	Not required to disclose by GRI 11: Oil and Gas sector 2021	Not applicable					
	305-7 Nitrogen oxides (NOx), sulfur oxides (SOx), and other significant air emissions	<a href="https://www.pttplc.com/en/Sustainability/Environment/Air.aspx">https://www.pttplc.com/en/Sustainability/Environment/Air.aspx</a> Performance Summary <a href="https://www.pttplc.com/en/Sustainability/Sustainabilitygovernance/Sustainabilityreport.aspx">https://www.pttplc.com/en/Sustainability/Sustainabilitygovernance/Sustainabilityreport.aspx</a>				11.3.2	3.9, 12.4, 14.3, 15.2	E4, E17	Planet: Air pollution - Air pollution		
Climate adaptation, resilience, and transition	Additional Sector Disclosures: Describe the organization's approach to public policy development and lobbying on climate change	<a href="https://www.pttplc.com/en/Sustainability/Environment/Climatechangemanagement.aspx">https://www.pttplc.com/en/Sustainability/Environment/Climatechangemanagement.aspx</a> <a href="https://www.pttplc.com/en/Sustainability/Sustainabilitygovernance/Network.aspx">https://www.pttplc.com/en/Sustainability/Sustainabilitygovernance/Network.aspx</a>				11.2.4		E1.1, G12	Planet: Climate change - TCFD implementation		



GRI STANDARD/ OTHER SOURCE	DISCLOSURE	LOCATION	OMISSION			GRI SECTOR STANDARD REF. NO.	SDG Targets	UNGC Principles	WEF	IFRS S1	IFRS S2
			REQUIREMENT(S) OMITTED	REASON	EXPLANATION						
GRI 308: Supplier Environmental Assessment 2016	308-1 New suppliers that were screened using environmental criteria	<a href="https://www.pttplc.com/en/Sustainability/Economics/Supplychainmanagement.aspx">https://www.pttplc.com/en/Sustainability/Economics/Supplychainmanagement.aspx</a>					5.2, 8.8, 16.1	G6, G7			
	308-2 Negative environmental impacts in the supply chain and actions taken			Not applicable	Not required to disclose by GRI 11: Oil and Gas sector 2021	Not applicable	5.2, 8.8, 16.1				
<b>Employment</b>											
GRI 3: Material Topics 2021	3-3 Management of material topics	56-1 One Report 2023 (Page 152-157)									
GRI 401: Employment 2016	401-1 New employee hires and employee turnover	<a href="https://www.pttplc.com/en/Sustainability/Social/Sustainablehumanresourcemanagement.aspx">https://www.pttplc.com/en/Sustainability/Social/Sustainablehumanresourcemanagement.aspx</a> Performance Summary <a href="https://www.pttplc.com/en/Sustainability/Sustainabilitygovernance/Sustainabilityreport.aspx">https://www.pttplc.com/en/Sustainability/Sustainabilitygovernance/Sustainabilityreport.aspx</a>				11.10.2	5.1, 8.2, 8.5, 8.6, 10.3		Prosperity: Employment and wealth generation - Absolute number and rate of employment		
	401-2 Benefits provided to full-time employees that are not provided to temporary or part-time employees	<a href="https://www.pttplc.com/en/Sustainability/Social/Sustainablehumanresourcemanagement.aspx">https://www.pttplc.com/en/Sustainability/Social/Sustainablehumanresourcemanagement.aspx</a>				11.10.3	8.2, 8.5				
	401-3 Parental leave	<a href="https://www.pttplc.com/en/Sustainability/Social/Sustainablehumanresourcemanagement.aspx">https://www.pttplc.com/en/Sustainability/Social/Sustainablehumanresourcemanagement.aspx</a> Performance Summary <a href="https://www.pttplc.com/en/Sustainability/Sustainabilitygovernance/Sustainabilityreport.aspx">https://www.pttplc.com/en/Sustainability/Sustainabilitygovernance/Sustainabilityreport.aspx</a>				11.10.4	5.1, 5.4, 8.5				
<b>Labor/management relations</b>											
GRI 3: Material Topics 2021	3-3 Management of material topics	56-1 One Report 2023 (Page 152-157)									
GRI 402: Labor/ Management Relations 2016	402-1 Minimum notice periods regarding operational changes	<a href="https://www.pttplc.com/en/Sustainability/Social/Sustainablehumanresourcemanagement.aspx">https://www.pttplc.com/en/Sustainability/Social/Sustainablehumanresourcemanagement.aspx</a>				11.10.5	8.8				
<b>Occupational health and safety</b>											
GRI 3: Material Topics 2021	3-3 Management of material topics	56-1 One Report 2023 (Page 152-157)									
GRI 403: Occupational Health and Safety 2018	403-1 Occupational health and safety management system	56-1 One Report 2023 (Page 174-181) <a href="https://www.pttplc.com/en/Sustainability/Social/Securitysafetyandoccupationalhealth.aspx">https://www.pttplc.com/en/Sustainability/Social/Securitysafetyandoccupationalhealth.aspx</a>				11.9.2	8.8				
	403-2 Hazard identification, risk assessment, and incident investigation	56-1 One Report 2023 (Page 175-177) <a href="https://www.pttplc.com/en/Sustainability/Social/Securitysafetyandoccupationalhealth.aspx">https://www.pttplc.com/en/Sustainability/Social/Securitysafetyandoccupationalhealth.aspx</a>				11.9.3	3.6, 3.9, 8.8, 16.1	L3, L4, L5	Principles of Governance: Risk and opportunity oversight - Integrating risk and opportunity into business process	Risk Management	

GRI STANDARD/ OTHER SOURCE	DISCLOSURE	LOCATION	OMISSION			GRI SECTOR STANDARD REF. NO.	SDG Targets	UNGC Principles	WEF	IFRS S1	IFRS S2	
			REQUIREMENT(S) OMITTED	REASON	EXPLANATION							
GRI 403: Occupational Health and Safety 2018	403-3 Occupational health services	56-1 One Report 2023 (Page 174-176) <a href="https://www.pttplc.com/en/Sustainability/Social/Securitysafetyandoccupationalhealth.aspx">https://www.pttplc.com/en/Sustainability/Social/Securitysafetyandoccupationalhealth.aspx</a>				11.9.4	8.8					
	403-4 Worker participation, consultation, and communication on occupational health and safety	56-1 One Report 2023 (Page 175-181) <a href="https://www.pttplc.com/en/Sustainability/Social/Securitysafetyandoccupationalhealth.aspx">https://www.pttplc.com/en/Sustainability/Social/Securitysafetyandoccupationalhealth.aspx</a>				11.9.5	8.8, 16.7					
	403-5 Worker training on occupational health and safety	56-1 One Report 2023 (Page 176) <a href="https://www.pttplc.com/en/Sustainability/Social/Securitysafetyandoccupationalhealth.aspx">https://www.pttplc.com/en/Sustainability/Social/Securitysafetyandoccupationalhealth.aspx</a>				11.9.6	3.6, 3.9, 8.8, 16.1	L3, L4, L5				
	403-6 Promotion of worker health	56-1 One Report 2023 (Page 175-177) <a href="https://www.pttplc.com/en/Sustainability/Social/Securitysafetyandoccupationalhealth.aspx">https://www.pttplc.com/en/Sustainability/Social/Securitysafetyandoccupationalhealth.aspx</a>				11.9.7	3.3, 3.5, 3.7, 3.8					
	403-7 Prevention and mitigation of occupational health and safety impacts directly linked by business relationships	56-1 One Report 2023 (Page 175-178) <a href="https://www.pttplc.com/en/Sustainability/Social/Securitysafetyandoccupationalhealth.aspx">https://www.pttplc.com/en/Sustainability/Social/Securitysafetyandoccupationalhealth.aspx</a>				11.9.8	8.8					
	403-8 Workers covered by an occupational health and safety management system	<a href="https://www.pttplc.com/en/Sustainability/Social/Securitysafetyandoccupationalhealth.aspx">https://www.pttplc.com/en/Sustainability/Social/Securitysafetyandoccupationalhealth.aspx</a> Performance Summary <a href="https://www.pttplc.com/en/Sustainability/Sustainabilitygovernance/Sustainabilityreport.aspx">https://www.pttplc.com/en/Sustainability/Sustainabilitygovernance/Sustainabilityreport.aspx</a>				11.9.9	3.6, 3.9, 8.8, 16.1, 16.3	G3, L1, L1.1, L2, L3, L4, L5				
	403-9 Work-related injuries	56-1 One Report 2023 (Page 179) <a href="https://www.pttplc.com/en/Sustainability/Social/Securitysafetyandoccupationalhealth.aspx">https://www.pttplc.com/en/Sustainability/Social/Securitysafetyandoccupationalhealth.aspx</a> Performance Summary <a href="https://www.pttplc.com/en/Sustainability/Sustainabilitygovernance/Sustainabilityreport.aspx">https://www.pttplc.com/en/Sustainability/Sustainabilitygovernance/Sustainabilityreport.aspx</a>				11.9.10	3.6, 3.9, 8.8, 16.1, 16.3	G3, L1, L1.1, L2, L3, L4, L5, L9	People: Health and well-being - Employee well-being (%) People: Health and well-being - Health and safety (%)			
	403-10 Work-related ill health	56-1 One Report 2023 (Page 179) <a href="https://www.pttplc.com/en/Sustainability/Social/Securitysafetyandoccupationalhealth.aspx">https://www.pttplc.com/en/Sustainability/Social/Securitysafetyandoccupationalhealth.aspx</a> Performance Summary <a href="https://www.pttplc.com/en/Sustainability/Sustainabilitygovernance/Sustainabilityreport.aspx">https://www.pttplc.com/en/Sustainability/Sustainabilitygovernance/Sustainabilityreport.aspx</a>				11.9.11	3.6, 3.9, 8.8, 16.1, 16.3	G3, L1, L1.1, L2, L3, L4, L5	People: Health and well-being - Employee well-being (%) People: Health and well-being - Health and safety (%)			
	<b>Training and education</b>											
	GRI 3: Material Topics 2021	3-3 Management of material topics	56-1 One Report 2023 (Page 152-157)									
GRI 404: Training and Education 2016	404-1 Average hours of training per year per employee	<a href="https://www.pttplc.com/en/Sustainability/Social/Sustainablehumanresourcemanagement.aspx">https://www.pttplc.com/en/Sustainability/Social/Sustainablehumanresourcemanagement.aspx</a> Performance Summary <a href="https://www.pttplc.com/en/Sustainability/Sustainabilitygovernance/Sustainabilityreport.aspx">https://www.pttplc.com/en/Sustainability/Sustainabilitygovernance/Sustainabilityreport.aspx</a>				11.10.6	4.3, 4.4, 4.5, 5.1, 8.2, 8.5, 10.3		People: Skills for the future - Training provided (#, \$)			
	404-2 Programs for upgrading employee skills and transition assistance programs	<a href="https://www.pttplc.com/en/Sustainability/Social/Sustainablehumanresourcemanagement.aspx">https://www.pttplc.com/en/Sustainability/Social/Sustainablehumanresourcemanagement.aspx</a>				11.7.3, 11.10.7	8.2, 8.5		People: Skills for the future - Monetized Impacts of Training - Increased earning capacity as a result of training intervention (% , \$)			

GRI STANDARD/ OTHER SOURCE	DISCLOSURE	LOCATION	OMISSION			GRI SECTOR STANDARD REF. NO.	SDG Targets	UNGC Principles	WEF	IFRS S1	IFRS S2
			REQUIREMENT(S) OMITTED	REASON	EXPLANATION						
GRI 404: Training and Education 2016	404-3 Percentage of employees receiving regular performance and career development reviews	<a href="https://www.pttplc.com/en/Sustainability/Social/Sustainablehumanresourcemanagement.aspx">https://www.pttplc.com/en/Sustainability/Social/Sustainablehumanresourcemanagement.aspx</a>					5.1, 8.5, 10.3				
<b>Diversity and equal opportunity</b>											
GRI 3: Material Topics 2021	3-3 Management of material topics	56-1 One Report 2023 (Page 152-157)							Principles of Governance: Quality of governing body - Remuneration	Metrics and Targets	
GRI 405: Diversity and Equal Opportunity 2016	405-1 Diversity of governance bodies and employees	<a href="https://www.pttplc.com/en/Sustainability/Sustainabilitygovernance/Corporategovernance.aspx">https://www.pttplc.com/en/Sustainability/Sustainabilitygovernance/Corporategovernance.aspx</a> <a href="https://www.pttplc.com/en/Sustainability/Sustainabilitygovernance/Sustainabilityreport.aspx">https://www.pttplc.com/en/Sustainability/Sustainabilitygovernance/Sustainabilityreport.aspx</a>				11.11.5	5.1, 5.5, 8.5, 16.7	L7, G11	Principles of Governance: Quality of governing body - Governance body composition People: Dignity and equality - Diversity and inclusion (%)		
	405-2 Ratio of basic salary and remuneration of women to men	<a href="https://www.pttplc.com/en/Sustainability/Social/Sustainablehumanresourcemanagement.aspx">https://www.pttplc.com/en/Sustainability/Social/Sustainablehumanresourcemanagement.aspx</a>				11.11.6	5.1, 8.5, 10.3	L8	People: Dignity and equality - Pay gap (%)		
<b>Non-discrimination</b>											
GRI 3: Material Topics 2021	3-3 Management of material topics	56-1 One Report 2023 (Page 152-157)									
GRI 406: Non-discrimination 2016	406-1 Incidents of discrimination and corrective actions taken	<a href="https://www.pttplc.com/en/Sustainability/Sustainabilitygovernance/Fairpractice.aspx">https://www.pttplc.com/en/Sustainability/Sustainabilitygovernance/Fairpractice.aspx</a>				11.11.7	5.1, 8.8, 16.3, 16.5, 16.10	AC5, G2, G8, L1.1, L3, L4	Principles of Governance: Ethical behaviour - Anti-Corruption People: Dignity and equality - Discrimination and Harassment Incidents (#) and the Total Amount of Monetary Losses (\$)		
<b>Freedom of association and collective bargaining</b>											
GRI 3: Material Topics 2021	3-3 Management of material topics	56-1 One Report 2023 (Page 152-157)									
GRI 407: Freedom of Association and Collective Bargaining 2016	407-1 Operations and suppliers in which the right to freedom of association and collective bargaining may be at risk	<a href="https://www.pttplc.com/en/Sustainability/Social/Humanright.aspx">https://www.pttplc.com/en/Sustainability/Social/Humanright.aspx</a>				11.13.2	5.2, 8.7, 8.8, 16.1, 16.2, 16.3	G6, G7, HR1, HR3, L2, HR7, HR8, L11, L3	Principles of Governance: Risk and opportunity oversight - Integrating risk and opportunity into business process		
<b>Child labor</b>											
GRI 3: Material Topics 2021	3-3 Management of material topics	56-1 One Report 2023 (Page 152-157)									
GRI 408: Child Labor 2016	408-1 Operations and suppliers at significant risk for incidents of child labor	<a href="https://www.pttplc.com/en/Sustainability/Social/Humanright.aspx">https://www.pttplc.com/en/Sustainability/Social/Humanright.aspx</a>					5.2, 8.7, 8.8, 16.1, 16.2, 16.3	G6, G7, HR1, HR3, L2, HR7, HR8, L11, L3	Principles of Governance: Risk and opportunity oversight - Integrating risk and opportunity into business process People: Dignity and equality - Human rights review, grievance impact and modern slavery (#, %)		

GRI STANDARD/ OTHER SOURCE	DISCLOSURE	LOCATION	OMISSION			GRI SECTOR STANDARD REF. NO.	SDG Targets	UNGC Principles	WEF	IFRS S1	IFRS S2
			REQUIREMENT(S) OMITTED	REASON	EXPLANATION						
<b>Forced or compulsory labor</b>											
GRI 3: Material Topics 2021	3-3 Management of material topics	56-1 One Report 2023 (Page 152-157)									
GRI 409: Forced or Compulsory Labor 2016	409-1 Operations and suppliers at significant risk for incidents of forced or compulsory labor	<a href="https://www.ptplc.com/en/Sustainability/Social/Humanright.aspx">https://www.ptplc.com/en/Sustainability/Social/Humanright.aspx</a>				11.12.2	5.2, 8.7, 8.8, 16.1, 16.2, 16.3	G6, G7, HR1, HR3, L2, HR7, HR8, L11, L3	Principles of Governance: Risk and opportunity oversight - Integrating risk and opportunity into business process		
<b>Security practices</b>											
GRI 3: Material Topics 2021	3-3 Management of material topics	56-1 One Report 2023 (Page 152-157)									
GRI 410: Security Practices 2016	410-1 Security personnel trained in human rights policies or procedures	<a href="https://www.ptplc.com/en/Sustainability/Social/Humanright.aspx">https://www.ptplc.com/en/Sustainability/Social/Humanright.aspx</a>				11.18.2					
<b>Rights of indigenous peoples</b>											
GRI 3: Material Topics 2021	3-3 Management of material topics	56-1 One Report 2023 (Page 152-157)									
GRI 411: Rights of Indigenous Peoples 2016	411-1 Incidents of violations involving rights of indigenous peoples	<a href="https://www.ptplc.com/en/Sustainability/Social/Humanright.aspx">https://www.ptplc.com/en/Sustainability/Social/Humanright.aspx</a>				11.17.2	5.2, 8.7, 8.8, 16.2,	HR7, HR8, L11, L3			
	Additional Sector Disclosures: List the locations of operations where indigenous peoples are present or affected by activities of the organization			Not applicable		11.17.3					
	Additional Sector Disclosures: Report if the organization has been involved in a process of seeking free, prior and informed consent (FPIC) from indigenous peoples for any of the organization's activities				Not applicable		11.17.4				
<b>Local communities</b>											
GRI 3: Material Topics 2021	3-3 Management of material topics	56-1 One Report 2023 (Page 152-157)							Prosperity: Community and social vitality - Total social investment (\$)		
GRI 413: Local Communities 2016	413-1 Operations with local community engagement, impact assessments, and development programs	56-1 One Report 2023 (Page 181-190) <a href="https://www.ptplc.com/en/Sustainability/Economics/Projectmanagement.aspx">https://www.ptplc.com/en/Sustainability/Economics/Projectmanagement.aspx</a>				11.15.2		E2, G8			

GRI STANDARD/ OTHER SOURCE	DISCLOSURE	LOCATION	OMISSION			GRI SECTOR STANDARD REF. NO.	SDG Targets	UNGC Principles	WEF	IFRS S1	IFRS S2
			REQUIREMENT(S) OMITTED	REASON	EXPLANATION						
GRI 413: Local Communities 2016	413-2 Operations with significant actual and potential negative impacts on local communities	<a href="https://www.pttplc.com/en/Sustainability/Economics/Projectmanagement.aspx">https://www.pttplc.com/en/Sustainability/Economics/Projectmanagement.aspx</a>				11.15.3	1.4, 2.3				
	Additional Sector Disclosures: Report the number and type of grievances from local communities identified	<a href="https://www.pttplc.com/en/Sustainability/Economics/Projectmanagement.aspx">https://www.pttplc.com/en/Sustainability/Economics/Projectmanagement.aspx</a>				11.15.4					
<b>Supplier social assessment</b>											
GRI 3: Material Topics 2021	3-3 Management of material topics	56-1 One Report 2023 (Page 152-157)									
GRI 414: Supplier Social Assessment 2016	414-1 New suppliers that were screened using social criteria	<a href="https://www.pttplc.com/en/Sustainability/Economics/Supplychainmanagement.aspx">https://www.pttplc.com/en/Sustainability/Economics/Supplychainmanagement.aspx</a>				11.10.8	5.2, 8.7, 8.8, 16.1, 16.2, 16.3	G6, G7, HR1, HR3, L2	Principles of Governance: Risk and opportunity oversight - Integrating risk and opportunity into business process People: Dignity and equality - Human rights review, grievance impact and modern slavery (#, %)		
	414-2 Negative social impacts in the supply chain and actions taken	<a href="https://www.pttplc.com/en/Sustainability/Economics/Supplychainmanagement.aspx">https://www.pttplc.com/en/Sustainability/Economics/Supplychainmanagement.aspx</a>				11.10.9	5.2, 8.8, 16.1				
<b>Public policy</b>											
GRI 3: Material Topics 2021	3-3 Management of material topics	56-1 One Report 2023 (Page 152-157)									
GRI 415: Public Policy 2016	415-1 Political contributions	<a href="https://www.pttplc.com/en/Sustainability/Sustainabilitygovernance/Network.aspx">https://www.pttplc.com/en/Sustainability/Sustainabilitygovernance/Network.aspx</a>				11.22.2	16.5		Principles of Governance: Ethical behaviour - Alignment of strategy and policies to lobbying		
<b>Customer health and safety</b>											
GRI 3: Material Topics 2021	3-3 Management of material topics	56-1 One Report 2023 (Page 152-157)									
GRI 416: Customer Health and Safety 2016	416-1 Assessment of the health and safety impacts of product and service categories	<a href="https://www.pttplc.com/en/Sustainability/Economics/Innovationandproductresponsibility.aspx">https://www.pttplc.com/en/Sustainability/Economics/Innovationandproductresponsibility.aspx</a>				11.3.3	3.6, 3.9, 8.8, 16.1		People: Health and well-being - Health and safety (%)		
	416-2 Incidents of non-compliance concerning the health and safety impacts of products and services	<a href="https://www.pttplc.com/en/Sustainability/Economics/Innovationandproductresponsibility.aspx">https://www.pttplc.com/en/Sustainability/Economics/Innovationandproductresponsibility.aspx</a>									
<b>Marketing and labeling</b>											
GRI 3: Material Topics 2021	3-3 Management of material topics	56-1 One Report 2023 (Page 152-157)				Not applicable					

GRI STANDARD/ OTHER SOURCE	DISCLOSURE	LOCATION	OMISSION			GRI SECTOR STANDARD REF. NO.	SDG Targets	UNGC Principles	WEF	IFRS S1	IFRS S2
			REQUIREMENT(S) OMITTED	REASON	EXPLANATION						
GRI 417: Marketing and Labeling 2016	417-1 Requirements for product and service information and labeling			Not applicable	Not required to disclose by GRI 11: Oil and Gas sector 2021	Not applicable	12.8				
	417-2 Incidents of non-compliance concerning product and service information and labeling	<a href="https://www.pttplc.com/en/Sustainability/Economics/Innovationandproductresponsibility.aspx">https://www.pttplc.com/en/Sustainability/Economics/Innovationandproductresponsibility.aspx</a>					16.3				
	417-3 Incidents of non-compliance concerning marketing communications	<a href="https://www.pttplc.com/en/Sustainability/Economics/Innovationandproductresponsibility.aspx">https://www.pttplc.com/en/Sustainability/Economics/Innovationandproductresponsibility.aspx</a>		Not applicable	Not required to disclose by GRI 11: Oil and Gas sector 2021	Not applicable	16.3				
<b>Customer privacy</b>											
GRI 3: Material Topics 2021	3-3 Management of material topics	56-1 One Report 2023 (Page 152-157)									
GRI 418: Customer Privacy 2016	418-1 Substantiated complaints concerning breaches of customer privacy and losses of customer data	<a href="https://www.pttplc.com/en/Sustainability/Economics/Innovationandproductresponsibility.aspx">https://www.pttplc.com/en/Sustainability/Economics/Innovationandproductresponsibility.aspx</a>		Not applicable	Not required to disclose by GRI 11: Oil and Gas sector 2021	Not applicable	5.1, 8.8, 16.3, 16.5, 16.10	AC5	Principles of Governance: Ethical behaviour - Anti-Corruption People: Dignity and equality - Discrimination and Harassment Incidents (#) and the Total Amount of Monetary Losses (\$)		



## International Financial Reporting Standards (IFRS) S1

IFRS S1 recommendation	Location	Mapping with IR Recommendation
<b>Governance</b>		
(a) the governance body(s) (which can include a board, committee or equivalent body charged with governance) or individual(s) responsible for oversight of sustainability-related risks and opportunities. Specifically, the entity shall identify that body(s) or individual(s) and disclose information about: (i) how responsibilities for sustainability-related risks and opportunities are reflected in the terms of reference, mandates, role descriptions and other related policies applicable to that body(s) or individual(s);	<a href="https://www.ptplc.com/en/Sustainability/Sustainabilitygovernance/Sustainabilitystrategy.aspx">https://www.ptplc.com/en/Sustainability/Sustainabilitygovernance/Sustainabilitystrategy.aspx</a>	IR Content Element: Governance
(ii) how the body(s) or individual(s) determines whether appropriate skills and competencies are available or will be developed to oversee strategies designed to respond to sustainability-related risks and opportunities;	<a href="https://www.ptplc.com/en/Sustainability/Sustainabilitygovernance/Corporategovernance.aspx">https://www.ptplc.com/en/Sustainability/Sustainabilitygovernance/Corporategovernance.aspx</a>	IR Content Element: Governance
(iii) how and how often the body(s) or individual(s) is informed about sustainability-related risks and opportunities;	<a href="https://www.ptplc.com/en/Sustainability/Sustainabilitygovernance/Sustainabilitystrategy.aspx">https://www.ptplc.com/en/Sustainability/Sustainabilitygovernance/Sustainabilitystrategy.aspx</a>	IR Content Element: Governance
(iv) how the body(s) or individual(s) takes into account sustainability-related risks and opportunities when overseeing the entity's strategy, its decisions on major transactions and its risk management processes and related policies, including whether the body(s) or individual(s) has considered trade-offs associated with those risks and opportunities; and	<a href="https://www.ptplc.com/en/Sustainability/Sustainabilitygovernance/Sustainabilitystrategy.aspx">https://www.ptplc.com/en/Sustainability/Sustainabilitygovernance/Sustainabilitystrategy.aspx</a>	IR Content Element: Governance
(v) how the body(s) or individual(s) oversees the setting of targets related to sustainability-related risks and opportunities, and monitors progress towards those targets (see paragraph 51), including whether and how related performance metrics are included in remuneration policies.	<a href="https://www.ptplc.com/en/Sustainability/Sustainabilitygovernance/Sustainabilitystrategy.aspx">https://www.ptplc.com/en/Sustainability/Sustainabilitygovernance/Sustainabilitystrategy.aspx</a>	IR Content Element: Governance
(b) management's role in the governance processes, controls and procedures used to monitor, manage and oversee sustainability-related risks and opportunities, including information about: (i) whether the role is delegated to a specific management-level position or management-level committee and how oversight is exercised over that position or committee; and	<a href="https://www.ptplc.com/en/Sustainability/Sustainabilitygovernance/Sustainabilitystrategy.aspx">https://www.ptplc.com/en/Sustainability/Sustainabilitygovernance/Sustainabilitystrategy.aspx</a>	IR Content Element: Governance
(ii) whether management uses controls and procedures to support the oversight of sustainability-related risks and opportunities and, if so, how these controls and procedures are integrated with other internal functions.	<a href="https://www.ptplc.com/en/Sustainability/Sustainabilitygovernance/Sustainabilitystrategy.aspx">https://www.ptplc.com/en/Sustainability/Sustainabilitygovernance/Sustainabilitystrategy.aspx</a>	IR Content Element: Governance
<b>Strategy - Sustainability-related risks and opportunities</b>		
(a) describe sustainability-related risks and opportunities that could reasonably be expected to affect the entity's prospects;	<a href="https://www.ptplc.com/en/Sustainability/Sustainabilitygovernance/Sustainabilitystrategy.aspx">https://www.ptplc.com/en/Sustainability/Sustainabilitygovernance/Sustainabilitystrategy.aspx</a>	IR Content Element: Strategy and resource allocation
(b) specify the time horizons—short, medium or long term—over which the effects of each of those sustainability-related risks and opportunities could reasonably be expected to occur; and	<a href="https://www.ptplc.com/en/Sustainability/Sustainabilitygovernance/Sustainabilitystrategy.aspx">https://www.ptplc.com/en/Sustainability/Sustainabilitygovernance/Sustainabilitystrategy.aspx</a>	IR Content Element: Strategy and resource allocation
(c) explain how the entity defines 'short term', 'medium term' and 'long term' and how these definitions are linked to the planning horizons used by the entity for strategic decision-making.	<a href="https://www.ptplc.com/en/Sustainability/Sustainabilitygovernance/Sustainabilitystrategy.aspx">https://www.ptplc.com/en/Sustainability/Sustainabilitygovernance/Sustainabilitystrategy.aspx</a>	IR Content Element: Strategy and resource allocation
<b>Strategy - Business model and value chain</b>		
(a) a description of the current and anticipated effects of sustainability-related risks and opportunities on the entity's business model and value chain; and	<a href="https://www.ptplc.com/en/Sustainability/Sustainabilitygovernance/Sustainabilitystrategy.aspx">https://www.ptplc.com/en/Sustainability/Sustainabilitygovernance/Sustainabilitystrategy.aspx</a>	IR Content Element: Strategy and resource allocation
(b) a description of where in the entity's business model and value chain sustainability-related risks and opportunities are concentrated (for example, geographical areas, facilities and types of assets).	<a href="https://www.ptplc.com/en/Sustainability/Sustainabilitygovernance/Sustainabilitystrategy.aspx">https://www.ptplc.com/en/Sustainability/Sustainabilitygovernance/Sustainabilitystrategy.aspx</a>	IR Content Element: Strategy and resource allocation IR Content Element: Business model
<b>Strategy - Strategy and decision-making</b>		
(a) how the entity has responded to, and plans to respond to, sustainability-related risks and opportunities in its strategy and decision-making;	<a href="https://www.ptplc.com/en/Sustainability/Sustainabilitygovernance/Sustainabilitystrategy.aspx">https://www.ptplc.com/en/Sustainability/Sustainabilitygovernance/Sustainabilitystrategy.aspx</a>	IR Content Element: Strategy and resource allocation
(b) the progress against plans the entity has disclosed in previous reporting periods, including quantitative and qualitative information; and	<a href="https://www.ptplc.com/en/Sustainability/Sustainabilitygovernance/Sustainabilitystrategy.aspx">https://www.ptplc.com/en/Sustainability/Sustainabilitygovernance/Sustainabilitystrategy.aspx</a>	IR Content Element: Strategy and resource allocation
(c) trade-offs between sustainability-related risks and opportunities that the entity considered (for example, in making a decision on the location of new operations, an entity might have considered the environmental impacts of those operations and the employment opportunities they would create in a community).	<a href="https://www.ptplc.com/en/Sustainability/Sustainabilitygovernance/Sustainabilitystrategy.aspx">https://www.ptplc.com/en/Sustainability/Sustainabilitygovernance/Sustainabilitystrategy.aspx</a>	IR Content Element: Strategy and resource allocation

IFRS S1 recommendation	Location	Mapping with IR Recommendation
<b>Strategy - Financial position, financial performance and cash flows</b>		
(a) the effects of sustainability-related risks and opportunities on the entity's financial position, financial performance and cash flows for the reporting period (current financial effects); and	<a href="https://www.pttplc.com/en/Sustainability/Sustainabilitygovernance/Sustainabilitystrategy.aspx">https://www.pttplc.com/en/Sustainability/Sustainabilitygovernance/Sustainabilitystrategy.aspx</a>	IR Content Element: Strategy and resource allocation
(b) the anticipated effects of sustainability-related risks and opportunities on the entity's financial position, financial performance and cash flows over the short, medium and long term, taking into consideration how sustainability-related risks and opportunities are included in the entity's financial planning (anticipated financial effects).	<a href="https://www.pttplc.com/en/Sustainability/Sustainabilitygovernance/Sustainabilitystrategy.aspx">https://www.pttplc.com/en/Sustainability/Sustainabilitygovernance/Sustainabilitystrategy.aspx</a>	IR Content Element: Strategy and resource allocation
<b>Strategy - Resilience</b>		
An entity shall disclose information that enables users of general purpose financial reports to understand its capacity to adjust to the uncertainties arising from sustainability-related risks. An entity shall disclose a qualitative and, if applicable, quantitative assessment of the resilience of its strategy and business model in relation to its sustainability-related risks, including information about how the assessment was carried out and its time horizon. When providing quantitative information, an entity may disclose a single amount or a range.	<a href="https://www.pttplc.com/en/Sustainability/Sustainabilitygovernance/Sustainabilitystrategy.aspx">https://www.pttplc.com/en/Sustainability/Sustainabilitygovernance/Sustainabilitystrategy.aspx</a>	IR Content Element: Strategy and resource allocation
<b>Risk Management</b>		
(a) the processes and related policies the entity uses to identify, assess, prioritise and monitor sustainability-related risks, including information about: (i) the inputs and parameters the entity uses (for example, information about data sources and the scope of operations covered in the processes);	<a href="https://www.pttplc.com/en/Sustainability/Sustainabilitygovernance/Riskandcrisismanagement.aspx">https://www.pttplc.com/en/Sustainability/Sustainabilitygovernance/Riskandcrisismanagement.aspx</a>	IR Content Element: Risk and Opportunity
(ii) whether and how the entity uses scenario analysis to inform its identification of sustainability-related risks;	<a href="https://www.pttplc.com/en/Sustainability/Sustainabilitygovernance/Riskandcrisismanagement.aspx">https://www.pttplc.com/en/Sustainability/Sustainabilitygovernance/Riskandcrisismanagement.aspx</a>	IR Content Element: Risk and Opportunity
(iii) how the entity assesses the nature, likelihood and magnitude of the effects of those risks (for example, whether the entity considers qualitative factors, quantitative thresholds or other criteria);	<a href="https://www.pttplc.com/en/Sustainability/Sustainabilitygovernance/Riskandcrisismanagement.aspx">https://www.pttplc.com/en/Sustainability/Sustainabilitygovernance/Riskandcrisismanagement.aspx</a>	IR Content Element: Risk and Opportunity
(iv) whether and how the entity prioritises sustainability-related risks relative to other types of risk;	<a href="https://www.pttplc.com/en/Sustainability/Sustainabilitygovernance/Riskandcrisismanagement.aspx">https://www.pttplc.com/en/Sustainability/Sustainabilitygovernance/Riskandcrisismanagement.aspx</a>	IR Content Element: Risk and Opportunity
(v) how the entity monitors sustainability-related risks; and	<a href="https://www.pttplc.com/en/Sustainability/Sustainabilitygovernance/Riskandcrisismanagement.aspx">https://www.pttplc.com/en/Sustainability/Sustainabilitygovernance/Riskandcrisismanagement.aspx</a>	IR Content Element: Risk and Opportunity
(vi) whether and how the entity has changed the processes it uses compared with the previous reporting period;	<a href="https://www.pttplc.com/en/Sustainability/Sustainabilitygovernance/Riskandcrisismanagement.aspx">https://www.pttplc.com/en/Sustainability/Sustainabilitygovernance/Riskandcrisismanagement.aspx</a>	IR Content Element: Risk and Opportunity
(b) the processes the entity uses to identify, assess, prioritise and monitor sustainability-related opportunities; and	<a href="https://www.pttplc.com/en/Sustainability/Sustainabilitygovernance/Riskandcrisismanagement.aspx">https://www.pttplc.com/en/Sustainability/Sustainabilitygovernance/Riskandcrisismanagement.aspx</a>	IR Content Element: Risk and Opportunity
(c) the extent to which, and how, the processes for identifying, assessing, prioritising and monitoring sustainability-related risks and opportunities are integrated into and inform the entity's overall risk management process.	<a href="https://www.pttplc.com/en/Sustainability/Sustainabilitygovernance/Riskandcrisismanagement.aspx">https://www.pttplc.com/en/Sustainability/Sustainabilitygovernance/Riskandcrisismanagement.aspx</a>	IR Content Element: Risk and Opportunity
<b>Metrics and Targets</b>		
(a) metrics required by an applicable IFRS Sustainability Disclosure Standard; and	Performance Summary <a href="https://www.pttplc.com/en/Sustainability/Sustainabilitygovernance/Sustainabilityreport.aspx">https://www.pttplc.com/en/Sustainability/Sustainabilitygovernance/Sustainabilityreport.aspx</a>	IR Content Element: Performance
(b) metrics the entity uses to measure and monitor: (i) that sustainability-related risk or opportunity; and	Performance Summary <a href="https://www.pttplc.com/en/Sustainability/Sustainabilitygovernance/Sustainabilityreport.aspx">https://www.pttplc.com/en/Sustainability/Sustainabilitygovernance/Sustainabilityreport.aspx</a>	IR Content Element: Performance
(ii) its performance in relation to that sustainability-related risk or opportunity, including progress towards any targets the entity has set, and any targets it is required to meet by law or regulation.	Performance Summary <a href="https://www.pttplc.com/en/Sustainability/Sustainabilitygovernance/Sustainabilityreport.aspx">https://www.pttplc.com/en/Sustainability/Sustainabilitygovernance/Sustainabilityreport.aspx</a>	IR Content Element: Performance

## The Task Force on Climate-related Financial Disclosures (TCFD)

TCFD recommendation	Location
<b>Governance : Disclose the organization's governance around climate related risks and opportunities.</b>	
a) Describe the board's oversight of climate-related risks and opportunities.	56-1 One Report 2023 (Page 159) <a href="https://www.pttplc.com/en/Sustainability/Environment/Climatechangemanagement.aspx">https://www.pttplc.com/en/Sustainability/Environment/Climatechangemanagement.aspx</a>
b) Describe management's role in assessing and managing climate-related risks and opportunities.	<a href="https://www.pttplc.com/en/Sustainability/Environment/Climatechangemanagement.aspx">https://www.pttplc.com/en/Sustainability/Environment/Climatechangemanagement.aspx</a>
<b>Strategy : Disclose the actual and potential impacts of climate-related risks and opportunities on the organization's businesses, strategy, and financial planning where such information is material.</b>	
a) Describe the climate-related risks and opportunities the organization has identified over the short, medium, and long term.	56-1 One Report 2023 (Page 126) <a href="https://www.pttplc.com/en/Sustainability/Environment/Climatechangemanagement.aspx">https://www.pttplc.com/en/Sustainability/Environment/Climatechangemanagement.aspx</a>
b) Describe the impact of climate-related risks and opportunities on the organization's businesses, strategy, and financial planning.	56-1 One Report 2023 (Page 126, 160-166) <a href="https://www.pttplc.com/en/Sustainability/Environment/Climatechangemanagement.aspx">https://www.pttplc.com/en/Sustainability/Environment/Climatechangemanagement.aspx</a>
c) Describe the resilience of the organization's strategy, taking into consideration different climate-related scenarios, including a 2°C or lower scenario.	<a href="https://www.pttplc.com/en/Sustainability/Environment/Climatechangemanagement.aspx">https://www.pttplc.com/en/Sustainability/Environment/Climatechangemanagement.aspx</a>
<b>Risk Management : Disclose how the organization identifies, assesses, and manages climate-related risks.</b>	
a) Describe the organization's processes for identifying and assessing climate-related risks.	<a href="https://www.pttplc.com/en/Sustainability/Environment/Climatechangemanagement.aspx">https://www.pttplc.com/en/Sustainability/Environment/Climatechangemanagement.aspx</a>
b) Describe the organization's processes for managing climate-related risks.	<a href="https://www.pttplc.com/en/Sustainability/Environment/Climatechangemanagement.aspx">https://www.pttplc.com/en/Sustainability/Environment/Climatechangemanagement.aspx</a>
c) Describe how processes for identifying, assessing, and managing climate-related risks are integrated into the organization's overall risk management.	<a href="https://www.pttplc.com/en/Sustainability/Environment/Climatechangemanagement.aspx">https://www.pttplc.com/en/Sustainability/Environment/Climatechangemanagement.aspx</a>
<b>Metrics and Targets: Disclose the metrics and targets used to assess and manage relevant climate-related risks and opportunities where such information is material.</b>	
a) Disclose the metrics used by the organization to assess climate-related risks and opportunities in line with its strategy and risk management process.	56-1 One Report 2023 (Page 159, 166-168) <a href="https://www.pttplc.com/en/Sustainability/Environment/Climatechangemanagement.aspx">https://www.pttplc.com/en/Sustainability/Environment/Climatechangemanagement.aspx</a> Performance Summary <a href="https://www.pttplc.com/en/Sustainability/Sustainabilitygovernance/Sustainabilityreport.aspx">https://www.pttplc.com/en/Sustainability/Sustainabilitygovernance/Sustainabilityreport.aspx</a>
b) Disclose Scope 1, Scope 2, and, if appropriate, Scope 3 greenhouse gas (GHG) emissions, and the related risks.	56-1 One Report 2023 (Page 159, 166-168) <a href="https://www.pttplc.com/en/Sustainability/Environment/Climatechangemanagement.aspx">https://www.pttplc.com/en/Sustainability/Environment/Climatechangemanagement.aspx</a> Performance Summary <a href="https://www.pttplc.com/en/Sustainability/Sustainabilitygovernance/Sustainabilityreport.aspx">https://www.pttplc.com/en/Sustainability/Sustainabilitygovernance/Sustainabilityreport.aspx</a>
c) Describe the targets used by the organization to manage climate-related risks and opportunities and performance against targets.	56-1 One Report 2023 (Page 159) <a href="https://www.pttplc.com/en/Sustainability/Environment/Climatechangemanagement.aspx">https://www.pttplc.com/en/Sustainability/Environment/Climatechangemanagement.aspx</a> Performance Summary <a href="https://www.pttplc.com/en/Sustainability/Sustainabilitygovernance/Sustainabilityreport.aspx">https://www.pttplc.com/en/Sustainability/Sustainabilitygovernance/Sustainabilityreport.aspx</a>

## CHRB content index

Themes and indicators		Location
<b>A.</b>	<b>Policy commitment</b>	
<b>A.1</b>	<b>Policy commitment</b>	
A.1.1	Commitment to respect human rights	56-1 One Report 2023. (Page 137) <a href="https://www.pttplc.com/en/Sustainability/Social/Humanright.aspx">https://www.pttplc.com/en/Sustainability/Social/Humanright.aspx</a> <a href="https://www.pttplc.com/uploads/Sustainability/2021/02.EN/13.%20Human%20Right%20Management/20210322_PTT%20Human%20Rights%20Statement_EN_Final_signed.pdf">https://www.pttplc.com/uploads/Sustainability/2021/02.EN/13.%20Human%20Right%20Management/20210322_PTT%20Human%20Rights%20Statement_EN_Final_signed.pdf</a>
A.1.2	Commitment to respect the human rights of worker	
A.1.2.a	Commitment to respect the human rights of workers: ILO Declaration on Fundamental Principles and Rights at Work	56-1 One Report 2023. (Page 137) <a href="https://www.pttplc.com/en/Sustainability/Social/Humanright.aspx">https://www.pttplc.com/en/Sustainability/Social/Humanright.aspx</a> <a href="https://www.pttplc.com/uploads/Sustainability/2021/02.EN/13.%20Human%20Right%20Management/20210322_PTT%20Human%20Rights%20Statement_EN_Final_signed.pdf">https://www.pttplc.com/uploads/Sustainability/2021/02.EN/13.%20Human%20Right%20Management/20210322_PTT%20Human%20Rights%20Statement_EN_Final_signed.pdf</a>
A.1.2.b	Commitment to respect the human rights of workers: Health and safety and working hours	56-1 One Report 2023. (Page 137) <a href="https://www.pttplc.com/en/Sustainability/Social/Humanright.aspx">https://www.pttplc.com/en/Sustainability/Social/Humanright.aspx</a> <a href="https://www.pttplc.com/uploads/Sustainability/2021/02.EN/13.%20Human%20Right%20Management/20210322_PTT%20Human%20Rights%20Statement_EN_Final_signed.pdf">https://www.pttplc.com/uploads/Sustainability/2021/02.EN/13.%20Human%20Right%20Management/20210322_PTT%20Human%20Rights%20Statement_EN_Final_signed.pdf</a>
A.1.3	Commitment to respect human rights particularly relevant to the sector	
A.1.3.a	Commitment to respect human rights particularly relevant to the sector: Land, natural resources and indigenous peoples' rights	56-1 One Report 2023. (Page 137) <a href="https://www.pttplc.com/en/Sustainability/Social/Humanright.aspx">https://www.pttplc.com/en/Sustainability/Social/Humanright.aspx</a> <a href="https://www.pttplc.com/uploads/Sustainability/2021/02.EN/13.%20Human%20Right%20Management/20210322_PTT%20Human%20Rights%20Statement_EN_Final_signed.pdf">https://www.pttplc.com/uploads/Sustainability/2021/02.EN/13.%20Human%20Right%20Management/20210322_PTT%20Human%20Rights%20Statement_EN_Final_signed.pdf</a>
A.1.3.b	Commitment to respect human rights particularly relevant to the sector: Security	56-1 One Report 2023. (Page 137) <a href="https://www.pttplc.com/en/Sustainability/Social/Humanright.aspx">https://www.pttplc.com/en/Sustainability/Social/Humanright.aspx</a> <a href="https://www.pttplc.com/uploads/Sustainability/2021/02.EN/13.%20Human%20Right%20Management/20210322_PTT%20Human%20Rights%20Statement_EN_Final_signed.pdf">https://www.pttplc.com/uploads/Sustainability/2021/02.EN/13.%20Human%20Right%20Management/20210322_PTT%20Human%20Rights%20Statement_EN_Final_signed.pdf</a>
A.1.4	Commitment to remedy	56-1 One Report 2023. (Page 137) <a href="https://www.pttplc.com/en/Sustainability/Social/Humanright.aspx">https://www.pttplc.com/en/Sustainability/Social/Humanright.aspx</a> <a href="https://www.pttplc.com/uploads/Sustainability/2021/02.EN/13.%20Human%20Right%20Management/20210322_PTT%20Human%20Rights%20Statement_EN_Final_signed.pdf">https://www.pttplc.com/uploads/Sustainability/2021/02.EN/13.%20Human%20Right%20Management/20210322_PTT%20Human%20Rights%20Statement_EN_Final_signed.pdf</a>
A.1.5	Commitment to respect the rights of human rights defenders	<a href="https://www.pttplc.com/en/Sustainability/Social/Humanright.aspx">https://www.pttplc.com/en/Sustainability/Social/Humanright.aspx</a>
<b>A.2</b>	<b>Board Level accountability</b>	
A.2.1	Commitment from the top	<a href="https://www.pttplc.com/en/Sustainability/Social/Humanright.aspx">https://www.pttplc.com/en/Sustainability/Social/Humanright.aspx</a>
A.2.2	Board responsibility	<a href="https://www.pttplc.com/en/Sustainability/Social/Humanright.aspx">https://www.pttplc.com/en/Sustainability/Social/Humanright.aspx</a>
A.2.3	Incentives and performance management	<a href="https://www.pttplc.com/en/Sustainability/Social/Humanright.aspx">https://www.pttplc.com/en/Sustainability/Social/Humanright.aspx</a>
A.2.4	Business model strategy and risks	<a href="https://www.pttplc.com/en/Sustainability/Social/Humanright.aspx">https://www.pttplc.com/en/Sustainability/Social/Humanright.aspx</a>

Themes and indicators		Location
<b>B</b>	<b>Embedding Respect and Human Rights Due Diligence</b>	
<b>B.1</b>	<b>Embedding Respect for human rights in company culture and management system</b>	
B.1.1	Responsibility and resources for day-to-day human rights functions	<a href="https://www.pttplc.com/en/Sustainability/Social/Humanright.aspx">https://www.pttplc.com/en/Sustainability/Social/Humanright.aspx</a>
B.1.2	Incentives and performance management	<a href="https://www.pttplc.com/en/Sustainability/Social/Humanright.aspx">https://www.pttplc.com/en/Sustainability/Social/Humanright.aspx</a>
B.1.3	Integration with enterprise risk management	<a href="https://www.pttplc.com/en/Sustainability/Social/Humanright.aspx">https://www.pttplc.com/en/Sustainability/Social/Humanright.aspx</a>
B.1.4	Communication/dissemination of policy commitment (s)	
B.1.4.a	Workers and external stakeholders	<a href="https://www.pttplc.com/en/Sustainability/Social/Humanright.aspx">https://www.pttplc.com/en/Sustainability/Social/Humanright.aspx</a>
B.1.4.b	Business relationships	<a href="https://www.pttplc.com/en/Sustainability/Social/Humanright.aspx">https://www.pttplc.com/en/Sustainability/Social/Humanright.aspx</a> <a href="https://www.pttplc.com/uploads/Sustainability/2021/02.EN/13.%20Human%20Right%20Management/20210322_PTT%20Human%20Rights%20Statement_EN_Final_signed.pdf">https://www.pttplc.com/uploads/Sustainability/2021/02.EN/13.%20Human%20Right%20Management/20210322_PTT%20Human%20Rights%20Statement_EN_Final_signed.pdf</a>
B.1.5	Training on human rights	<a href="https://www.pttplc.com/en/Sustainability/Social/Humanright.aspx">https://www.pttplc.com/en/Sustainability/Social/Humanright.aspx</a> <a href="https://www.pttplc.com/en/Sustainability/Economics/Supplychainmanagement.aspx">https://www.pttplc.com/en/Sustainability/Economics/Supplychainmanagement.aspx</a>
B.1.6	Monitoring and corrective actions	<a href="https://www.pttplc.com/en/Sustainability/Social/Humanright.aspx">https://www.pttplc.com/en/Sustainability/Social/Humanright.aspx</a> <a href="https://www.pttplc.com/en/Sustainability/Economics/Supplychainmanagement.aspx">https://www.pttplc.com/en/Sustainability/Economics/Supplychainmanagement.aspx</a>
B.1.7	Engaging and terminating business relationships	<a href="https://www.pttplc.com/en/Sustainability/Social/Humanright.aspx">https://www.pttplc.com/en/Sustainability/Social/Humanright.aspx</a> <a href="https://www.pttplc.com/en/Sustainability/Economics/Supplychainmanagement.aspx">https://www.pttplc.com/en/Sustainability/Economics/Supplychainmanagement.aspx</a>
B.1.8	Approach to engaging with affected stakeholders	<a href="https://www.pttplc.com/en/Sustainability/Social/Humanright.aspx">https://www.pttplc.com/en/Sustainability/Social/Humanright.aspx</a> <a href="https://www.pttplc.com/en/Sustainability/Economics/Projectmanagement.aspx">https://www.pttplc.com/en/Sustainability/Economics/Projectmanagement.aspx</a> <a href="https://www.pttplc.com/en/Sustainability/Social/Sustainablehumanresourcemanagement.aspx">https://www.pttplc.com/en/Sustainability/Social/Sustainablehumanresourcemanagement.aspx</a>
<b>B.2</b>	<b>Human Rights Due Diligence</b>	
B.2.1	Identifying human rights risks and impacts	<a href="https://www.pttplc.com/en/Sustainability/Social/Humanright.aspx">https://www.pttplc.com/en/Sustainability/Social/Humanright.aspx</a>
B.2.2	Assessing human rights risks and impacts	<a href="https://www.pttplc.com/en/Sustainability/Social/Humanright.aspx">https://www.pttplc.com/en/Sustainability/Social/Humanright.aspx</a>
B.2.3	Integrating and acting on human rights risks and impact assessments	<a href="https://www.pttplc.com/en/Sustainability/Social/Humanright.aspx">https://www.pttplc.com/en/Sustainability/Social/Humanright.aspx</a>
B.2.4	Tracking the effectiveness of actions to respond to human rights risks and impacts	<a href="https://www.pttplc.com/en/Sustainability/Social/Humanright.aspx">https://www.pttplc.com/en/Sustainability/Social/Humanright.aspx</a> <a href="https://www.pttplc.com/en/Sustainability/Economics/Projectmanagement.aspx">https://www.pttplc.com/en/Sustainability/Economics/Projectmanagement.aspx</a>
B.2.5	Communicating on human rights impacts	<a href="https://www.pttplc.com/en/Sustainability/Social/Humanright.aspx">https://www.pttplc.com/en/Sustainability/Social/Humanright.aspx</a>
<b>C.</b>	<b>Remedies and grievance mechanism</b>	
C.1	Grievance mechanism (s) for workers	<a href="https://www.pttplc.com/en/Sustainability/Social/Humanright.aspx">https://www.pttplc.com/en/Sustainability/Social/Humanright.aspx</a> <a href="https://www.pttplc.com/en/Sustainability/Social/Sustainablehumanresourcemanagement.aspx">https://www.pttplc.com/en/Sustainability/Social/Sustainablehumanresourcemanagement.aspx</a>
C.2	Grievance mechanism (s) for external individuals and communities	<a href="https://www.pttplc.com/en/Sustainability/Social/Humanright.aspx">https://www.pttplc.com/en/Sustainability/Social/Humanright.aspx</a> <a href="https://www.pttplc.com/en/Sustainability/Economics/Projectmanagement.aspx">https://www.pttplc.com/en/Sustainability/Economics/Projectmanagement.aspx</a>
C.3	Users are involved in the design and performance of the mechanism (s)	<a href="https://www.pttplc.com/en/Sustainability/Economics/Projectmanagement.aspx">https://www.pttplc.com/en/Sustainability/Economics/Projectmanagement.aspx</a> <a href="https://www.pttplc.com/en/Sustainability/Social/Sustainablehumanresourcemanagement.aspx">https://www.pttplc.com/en/Sustainability/Social/Sustainablehumanresourcemanagement.aspx</a>
C.4	Procedures related to the grievance mechanism(s) are equitable, publicly available and explained	<a href="https://www.pttplc.com/en/Sustainability/Social/Humanright.aspx">https://www.pttplc.com/en/Sustainability/Social/Humanright.aspx</a> <a href="https://www.pttplc.com/en/Sustainability/Economics/Projectmanagement.aspx">https://www.pttplc.com/en/Sustainability/Economics/Projectmanagement.aspx</a>
C.5	Prohibition of retaliation for raising complaints or concerns	<a href="https://www.pttplc.com/en/Sustainability/Social/Humanright.aspx">https://www.pttplc.com/en/Sustainability/Social/Humanright.aspx</a>
C.6	Company involvement with state-based judicial and non judicial grievance mechanisms	<a href="https://www.pttplc.com/uploads/Sustainability/2021/02.EN/13.%20Human%20Right%20Management/20210322_PTT%20Human%20Rights%20Statement_EN_Final_signed.pdf">https://www.pttplc.com/uploads/Sustainability/2021/02.EN/13.%20Human%20Right%20Management/20210322_PTT%20Human%20Rights%20Statement_EN_Final_signed.pdf</a>

Themes and indicators		Location
C.7	Remediating adverse impacts	<a href="https://www.ptplc.com/en/Sustainability/Social/Humanright.aspx">https://www.ptplc.com/en/Sustainability/Social/Humanright.aspx</a> <a href="https://www.ptplc.com/en/Sustainability/Economics/Projectmanagement.aspx">https://www.ptplc.com/en/Sustainability/Economics/Projectmanagement.aspx</a>
C.8	Communication on the effectiveness of grievance mechanism (s) and incorporating lessons learned	<a href="https://www.ptplc.com/en/Sustainability/Social/Humanright.aspx">https://www.ptplc.com/en/Sustainability/Social/Humanright.aspx</a> <a href="https://www.ptplc.com/en/Sustainability/Economics/Projectmanagement.aspx">https://www.ptplc.com/en/Sustainability/Economics/Projectmanagement.aspx</a>
<b>D.</b>	<b>Performance: Company human rights practices</b>	
D.3.1	Living wage (in own extractive operations, which includes JVs)	<a href="https://www.ptplc.com/en/Sustainability/Social/Sustainablehumanresource management.aspx">https://www.ptplc.com/en/Sustainability/Social/Sustainablehumanresource management.aspx</a>
D.3.2	Transparency and accountability (in own extractive operations, which includes JVs)	<a href="https://www.ptplc.com/en/Sustainability/Economics/Taxstrategy.aspx">https://www.ptplc.com/en/Sustainability/Economics/Taxstrategy.aspx</a>
D.3.3	Freedom of association and collective bargaining (in own extractive operations, which includes JVs)	<a href="https://www.ptplc.com/en/Sustainability/Social/Sustainablehumanresource management.aspx">https://www.ptplc.com/en/Sustainability/Social/Sustainablehumanresource management.aspx</a> <a href="https://www.ptplc.com/uploads/Sustainability/2022/02.EN/09.Supply%20Chain%20Management/1.6.1_Supportive_Doc_S-%E0%B8%88%E0%B8%81.%E0%B8%88%E0%B8%9A%E0%B8%8D.-99-0002_PTT%20Suppliers%20Sustainable%20Code%20of%20Condu_1.pdf">https://www.ptplc.com/uploads/Sustainability/2022/02.EN/09.Supply%20Chain%20Management/1.6.1_Supportive_Doc_S-%E0%B8%88%E0%B8%81.%E0%B8%88%E0%B8%9A%E0%B8%8D.-99-0002_PTT%20Suppliers%20Sustainable%20Code%20of%20Condu_1.pdf</a>
D.3.4	Health and safety: Fatalities, lost days, injury, occupational disease rates (in own extractive operations, which includes JVs)	56-1 One Report 2023 (Page 174, 179) <a href="https://www.ptplc.com/en/Sustainability/Social/Securitysafetyandoccupationalhealth.aspx">https://www.ptplc.com/en/Sustainability/Social/Securitysafetyandoccupationalhealth.aspx</a> PTT Performance Summary <a href="https://www.ptplc.com/en/Sustainability/Sustainabilitygovernance/Sustainabilityreport.aspx">https://www.ptplc.com/en/Sustainability/Sustainabilitygovernance/Sustainabilityreport.aspx</a> <a href="https://www.ptplc.com/uploads/Sustainability/2022/02.EN/09.Supply%20Chain%20Management/1.6.1_Supportive_Doc_S-%E0%B8%88%E0%B8%81.%E0%B8%88%E0%B8%9A%E0%B8%8D.-99-0002_PTT%20Suppliers%20Sustainable%20Code%20of%20Condu_1.pdf">https://www.ptplc.com/uploads/Sustainability/2022/02.EN/09.Supply%20Chain%20Management/1.6.1_Supportive_Doc_S-%E0%B8%88%E0%B8%81.%E0%B8%88%E0%B8%9A%E0%B8%8D.-99-0002_PTT%20Suppliers%20Sustainable%20Code%20of%20Condu_1.pdf</a>
D.3.5	Indigenous peoples' rights and free prior and informed consent (FPIC) (in own extractive operations, which includes JVs)	<a href="https://www.ptplc.com/en/Sustainability/Social/Humanright.aspx">https://www.ptplc.com/en/Sustainability/Social/Humanright.aspx</a> <a href="https://www.ptplc.com/uploads/Sustainability/2021/02.EN/13.%20Human%20Right%20Management/20210322_PTT%20Human%20Rights%20Statement_EN_Final_signed.pdf">https://www.ptplc.com/uploads/Sustainability/2021/02.EN/13.%20Human%20Right%20Management/20210322_PTT%20Human%20Rights%20Statement_EN_Final_signed.pdf</a> <a href="https://www.ptplc.com/en/Sustainability/Economics/Projectmanagement.aspx">https://www.ptplc.com/en/Sustainability/Economics/Projectmanagement.aspx</a>
D.3.6	Land rights: Land acquisition (in own extractive operations, which includes JVs)	<a href="https://www.ptplc.com/en/Sustainability/Economics/Projectmanagement.aspx">https://www.ptplc.com/en/Sustainability/Economics/Projectmanagement.aspx</a>
D.3.7	Security (in own extractive operations, which includes JVs)	<a href="https://www.ptplc.com/en/Sustainability/Social/Humanright.aspx">https://www.ptplc.com/en/Sustainability/Social/Humanright.aspx</a> <a href="https://www.ptplc.com/uploads/Sustainability/2021/02.EN/13.%20Human%20Right%20Management/20210322_PTT%20Human%20Rights%20Statement_EN_Final_signed.pdf">https://www.ptplc.com/uploads/Sustainability/2021/02.EN/13.%20Human%20Right%20Management/20210322_PTT%20Human%20Rights%20Statement_EN_Final_signed.pdf</a> <a href="https://www.ptplc.com/en/Sustainability/Social/Securitysafetyandoccupationalhealth.aspx">https://www.ptplc.com/en/Sustainability/Social/Securitysafetyandoccupationalhealth.aspx</a>
D.3.8	Water and sanitation (in own extractive operations, which includes JVs)	<a href="https://www.ptplc.com/en/Sustainability/Environment/Environmentmanagement.aspx">https://www.ptplc.com/en/Sustainability/Environment/Environmentmanagement.aspx</a>
D.3.9	Women's rights (in own extractive operations, which includes JVs)	<a href="https://www.ptplc.com/en/Sustainability/Social/Sustainablehumanresource management.aspx">https://www.ptplc.com/en/Sustainability/Social/Sustainablehumanresource management.aspx</a>
<b>E.</b>	<b>Performance: Response to serious allegations</b>	
E.1	The company has responded publicly to the allegation	<a href="https://www.ptplc.com/en/Sustainability/Social/Humanright.aspx">https://www.ptplc.com/en/Sustainability/Social/Humanright.aspx</a>
E.2	The company has investigated and taken appropriate action	<a href="https://www.ptplc.com/en/Sustainability/Social/Humanright.aspx">https://www.ptplc.com/en/Sustainability/Social/Humanright.aspx</a>
E.3	The company has engaged with affected stakeholders to provide for or cooperate in remedy (ies)	<a href="https://www.ptplc.com/en/Sustainability/Social/Humanright.aspx">https://www.ptplc.com/en/Sustainability/Social/Humanright.aspx</a>

